

**CRHR2 Antibody (N-term)**  
**Purified Rabbit Polyclonal Antibody (Pab)**  
**Catalog # AP6787a****Specification**

---

**CRHR2 Antibody (N-term) - Product Information**

Application	FC, IHC-P, WB,E
Primary Accession	<a href="#">Q13324</a>
Other Accession	<a href="#">P47866</a> , <a href="#">Q60748</a>
Reactivity	Human, Mouse
Predicted	Rat
Host	Rabbit
Clonality	Polyclonal
Isotype	Rabbit IgG
Calculated MW	47688
Antigen Region	84-114

**CRHR2 Antibody (N-term) - Additional Information****Gene ID** 1395**Other Names**

Corticotropin-releasing factor receptor 2, CRF-R-2, CRF-R2, CRFR-2, Corticotropin-releasing hormone receptor 2, CRH-R-2, CRH-R2, CRHR2, CRF2R, CRH2R

**Target/Specificity**

This CRHR2 antibody is generated from rabbits immunized with a KLH conjugated synthetic peptide between 84-114 amino acids from the N-terminal region of human CRHR2.

**Dilution**

FC~~1:10~50

IHC-P~~1:10~50

WB~~1:1000

E~~Use at an assay dependent concentration.

**Format**

Purified polyclonal antibody supplied in PBS with 0.09% (W/V) sodium azide. This antibody is prepared by Saturated Ammonium Sulfate (SAS) precipitation followed by dialysis against PBS.

**Storage**

Maintain refrigerated at 2-8°C for up to 2 weeks. For long term storage store at -20°C in small aliquots to prevent freeze-thaw cycles.

**Precautions**

CRHR2 Antibody (N-term) is for research use only and not for use in diagnostic or therapeutic procedures.

**CRHR2 Antibody (N-term) - Protein Information**

**Name** CRHR2

**Synonyms** CRF2R, CRH2R

**Function** G-protein coupled receptor for CRH (corticotropin-releasing factor), UCN (urocortin), UCN2 and UCN3. Has high affinity for UCN. Ligand binding causes a conformation change that triggers signaling via guanine nucleotide-binding proteins (G proteins) and down-stream effectors, such as adenylate cyclase. Promotes the activation of adenylate cyclase, leading to increased intracellular cAMP levels.

**Cellular Location**

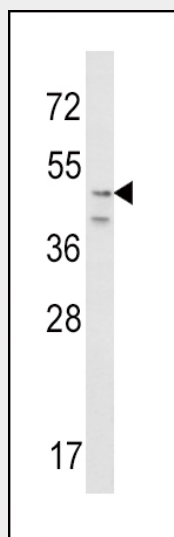
Cell membrane; Multi-pass membrane protein

**CRHR2 Antibody (N-term) - Protocols**

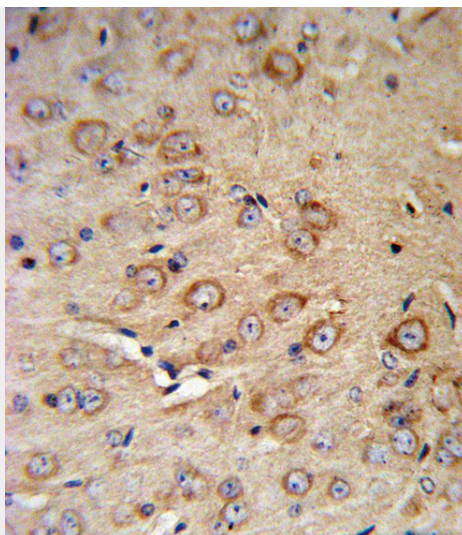
Provided below are standard protocols that you may find useful for product applications.

- [Western Blot](#)
- [Blocking Peptides](#)
- [Dot Blot](#)
- [Immunohistochemistry](#)
- [Immunofluorescence](#)
- [Immunoprecipitation](#)
- [Flow Cytometry](#)
- [Cell Culture](#)

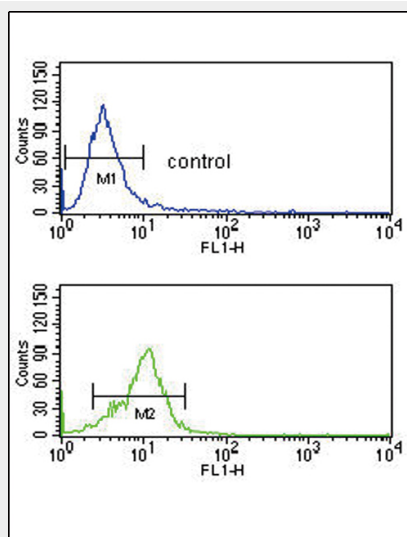
**CRHR2 Antibody (N-term) - Images**



Western blot analysis of CRHR2 Antibody (N-term) (Cat. #AP6787a) in NIH-3T3 cell line lysates (35ug/lane). CRHR2 (arrow) was detected using the purified Pab.



CRHR2 Antibody (N-term) (Cat. #AP6787a) IHC analysis in formalin fixed and paraffin embedded mouse brain tissue followed by peroxidase conjugation of the secondary antibody and DAB staining. This data demonstrates the use of the CRHR2 Antibody (N-term) for immunohistochemistry. Clinical relevance has not been evaluated.



CRHR2 Antibody (N-term) (Cat. #AP6787a) flow cytometry analysis of K562 cells (bottom histogram) compared to a negative control cell (top histogram). FITC-conjugated goat-anti-rabbit secondary antibodies were used for the analysis.

### CRHR2 Antibody (N-term) - Background

CRHR2 is a receptor for corticotropin releasing factor. It shows high-affinity CRF binding. Also binds to urocortin I, II and III. The activity of this receptor is mediated by G proteins which activate adenylyl cyclase.

### CRHR2 Antibody (N-term) - References

Yerges, L.M., et.al., J. Bone Miner. Res. (2009)